

Monday, Jan 27

Warm-up: 435.78×5.9

In Class: Unit Rate Introduction: "Food for May" lab.

Homework: 76.341×3.8 **SHOW WORK FOR CREDIT**

Tuesday, Jan 28

Warm-up: Russell took a total of 6 pages of notes during 3 hours of class. In all, how many hours will Russell have to spend in class before he will have a total of 16 pages of notes in his notebook? Solve by setting up a proportion.

In Class: Unit Rates Basics IXL R8 & R11

Homework: Juan rides his bike with a constant speed of 18 miles per hour. How long will he take to travel a distance of 64.5 miles?

Wednesday, Jan 29

Warm-up: What is the better deal, 12 calendars for \$122 or 36 calendars for \$312?

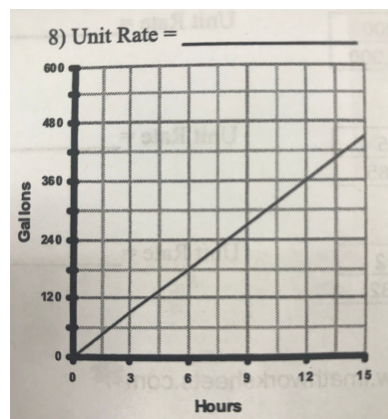
In Class: Long Division with Unit Rates “To the Market”

Homework: SHOW work for credit

Juan rides his bike with a constant speed of 17 miles per hour. How long will he take to travel a distance of 13.25 miles?

Thursday, Jan 30: Calculators needed today

Warm-up: Identify the unit rate from the graph. Hint, find a coordinate.



In Class: Unit Rates with Tables and Graphs Handout

Homework: Emily rides her horse with a constant speed of 6 miles per hour. How long will she take to travel a distance of 2.1 miles?

Friday, Jan 31

Warm-up: Ms. Johnson can buy 18lbs of dog food for \$18.18. At this rate, how much is 1lb of dog food?

In Class: Long Division IXL U6

Homework: BAK - Be a kid! Enjoy time with friends and family :)