

Day 1 (Monday, March 2)

Warm-up: Use this triangle to answer the questions below.



If the triangle above represents $\frac{1}{6}$, draw $\frac{1}{2}$.

If the triangle above represents $\frac{1}{2}$, draw $\frac{1}{4}$.

In Class: Study Guide for test tomorrow.

Homework: Below is a fraction strip that represents 1 whole. Label the following: $\frac{1}{2}$, $\frac{1}{4}$, $\frac{3}{4}$, $\frac{1}{8}$, $\frac{7}{10}$, 0.05, 0.85, $\frac{1}{10}$,

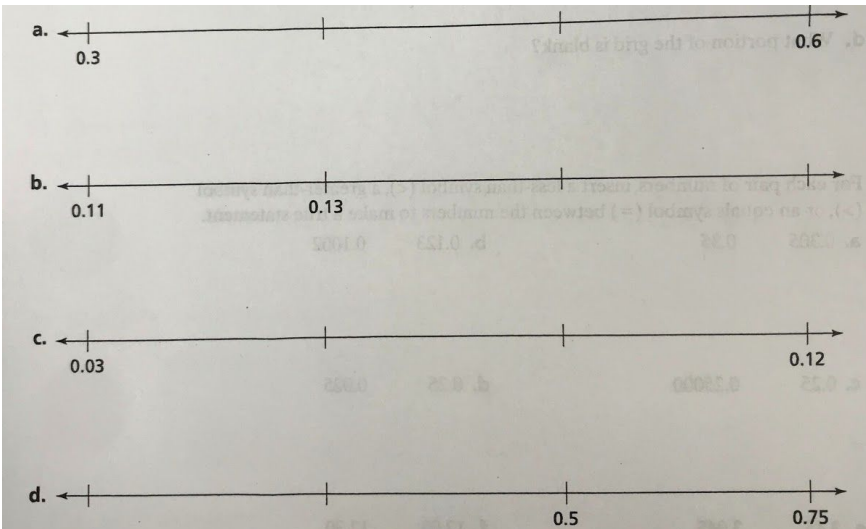


0

1

Day 2 (Tuesday, March 3) TEST DAY

Warm-up: Label each empty tick mark.



In Class: Test Fractions and Decimals

Homework: Equivalent Fractions Coloring sheet :)

Day 3 (Wednesday, March 4)

Warm-up: Determine the % shaded on the homework coloring sheet.

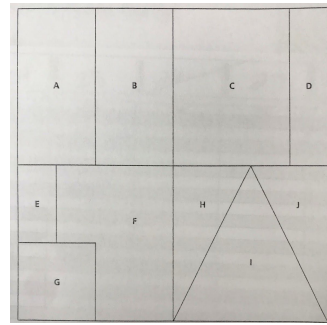
In Class: 1.2 (LBR) Fractional parts

Homework: Determine what fraction of the whole, each shape is. Large sheet provided.

A = _____, B = _____, C = _____, D = _____,

E = _____, F = _____, G = _____, H = _____,

H = _____, I = _____, J = _____



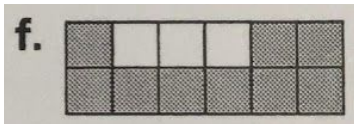
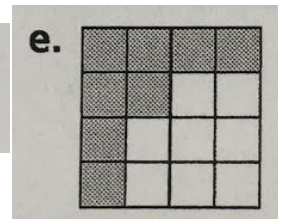
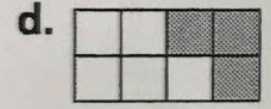
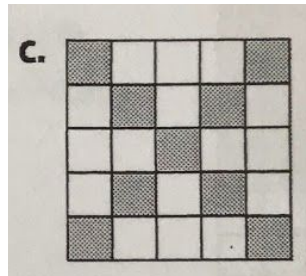
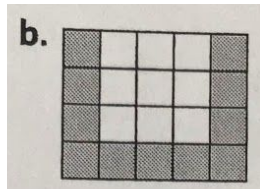
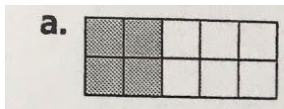
Day 4 (Thursday, March 5)

Warm-up: Given the pieces below, draw and color the whole.



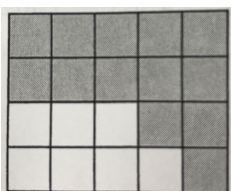
In Class: Percents: CBP Lesson 4.1

Homework: For each grid below, express the shaded region of the grid as a ratio, a fraction, and a percent.



Day 5 (Friday, March 6)

Warm-up:



Each square in this shape represents $\frac{1}{4}$.

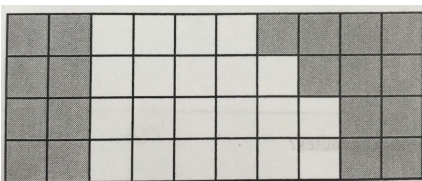
What whole number is represented by the whole grid? _____

What decimal is represented by the shaded region on the grid? _____

Each square in this shape represents 0.25.

What whole number is represented by the whole grid? _____

What fraction is represented by the shaded region on the grid? _____



In Class: Percents: CBP Lesson 4.2

Homework: B.A.K. Enjoy time with friends and family:)